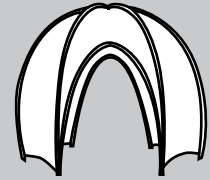


**PINK INC PROVIDES:**

- 1 Mod Pod Fabric
- 1 Hub
- 8 18" Base Covers
- 16 5' PVC Pipes with dowel in one end
- 8 2' -6" PVC Pipes

**YOU PROVIDE:**

- Site Plan/Event Layout
- Four Person Team
- 8 18" Base Plates with Nipples, 35 lbs min
- Gloves
- Sewing Kit
- Zip-Ties
- Plastic Drop Cloth
- Shears or Diagonal Cutters



Additional Support Please Call:  
212-253-6666 or  
After Hours: 646-853-3900

Be sure to have these pieces near the final location.

5' PVC



x 16

2' -6" PVC



x 8

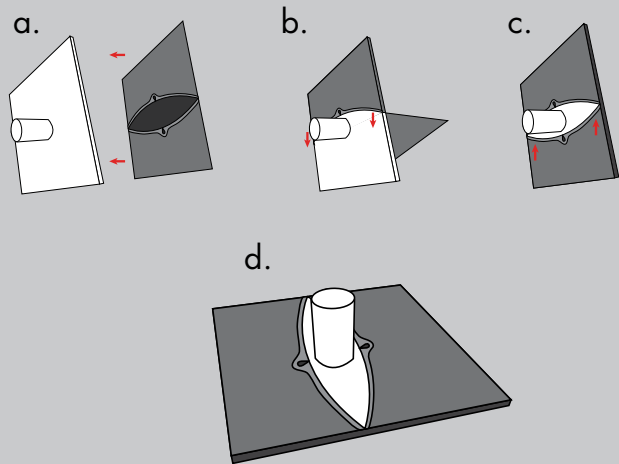
Hub



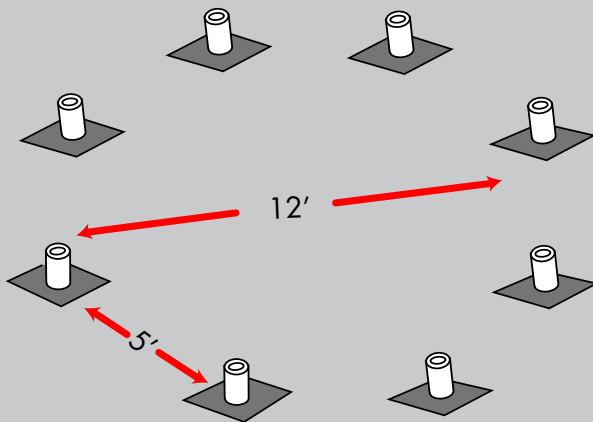
x 1

Prior to assembly, lay out drop cloth in designated work location. You will need a 20' x 20' workspace. This location should also be the final location. Before working with fabric, wash hands or put on gloves.

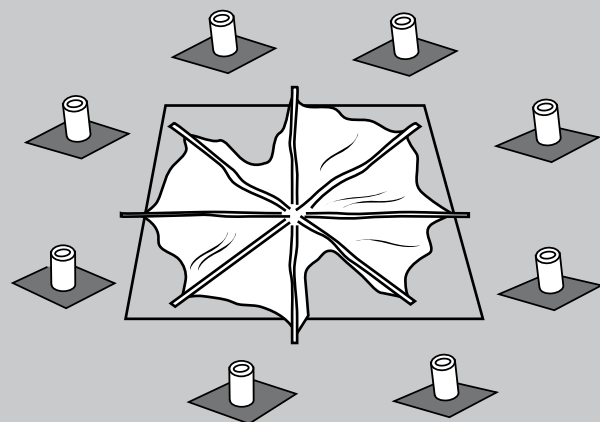
1. Place the base cover onto the base plates as indicated below.



2. Lay covered base plates in the final location. The base plates should be placed in an approximately 12' dia. circle and roughly 5' apart from one another.

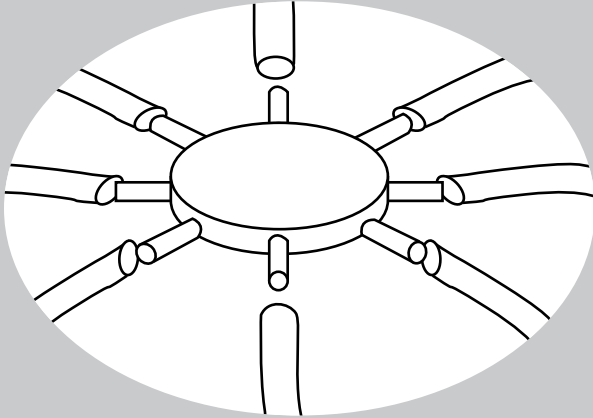


3. Locate the Mod Pod fabric and place onto the drop cloth in the center of the base plate circle. The side with the visible seams and tag should face down.

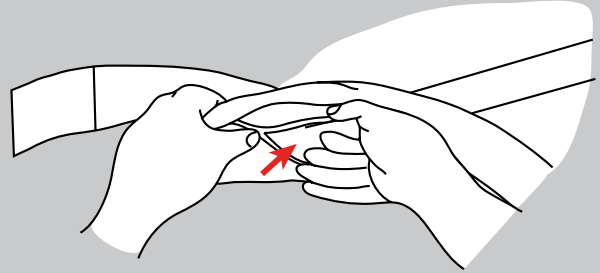


Any and all rights (including, without limitation, copyright, design patent, use patent and trademark) in and to all designs, concepts, renderings, or graphics (collectively, "Design") represented in this document were created by Moss Inc. and remain the sole and exclusive property of Moss Inc. Use of any such Design by the recipient without required purchase is strictly prohibited. ©2010

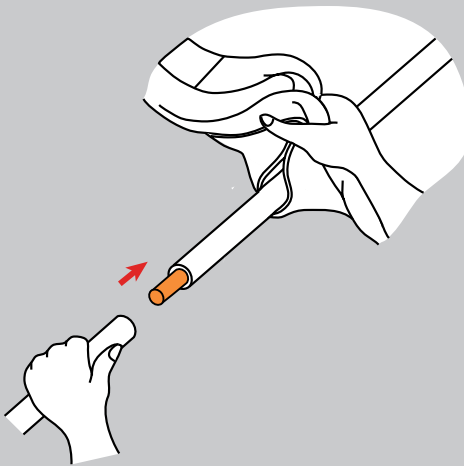
4. The runners meet at a central location in the middle of the fabric. Place the hub at the point where they meet.



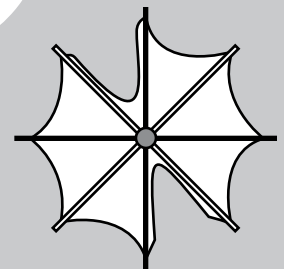
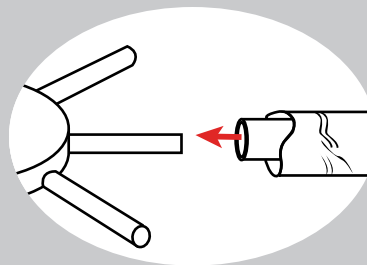
5. Lift flaps to reveal openings where PVC is to be inserted. Look closely as openings are within the seams.



6. Feed the open end of one 5' PVC pipe into the runner through the opening on the underside. When it's almost fully in the runner, insert another 5' PVC's open end over the dowel end of the first piece. Feed the second pipe in until the first one meets up with the hub.

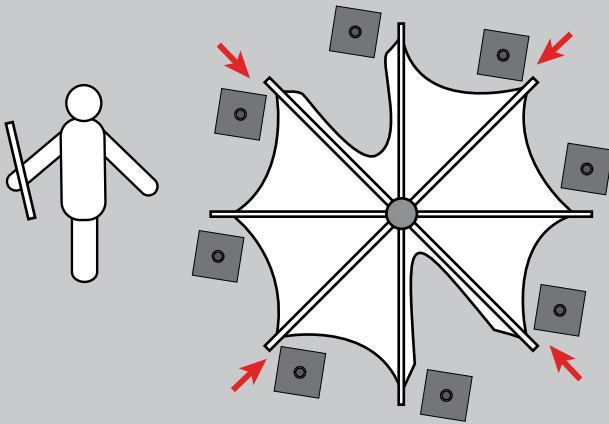


7. Insert the PVC pipe onto the hub. Repeat steps 4 - 6 for the remaining runners. The Mod Pod will be spread out flat on the ground. Each end corresponds with a base plate.

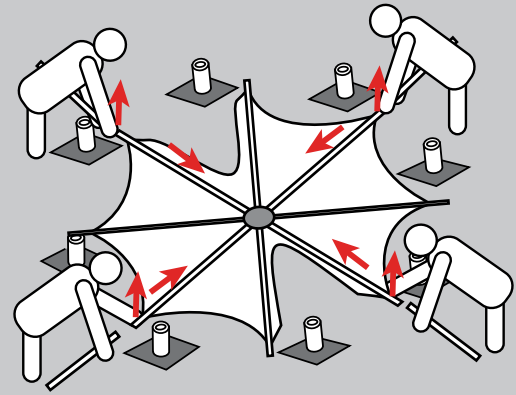


Any and all rights (including, without limitation, copyright, design patent, use patent and trademark) in and to all designs, concepts, renderings, or graphics (collectively, "Design") represented in this document were created by Moss Inc. and remain the sole and exclusive property of Moss Inc. Use of any such Design by the recipient without required purchase is strictly prohibited. ©2010

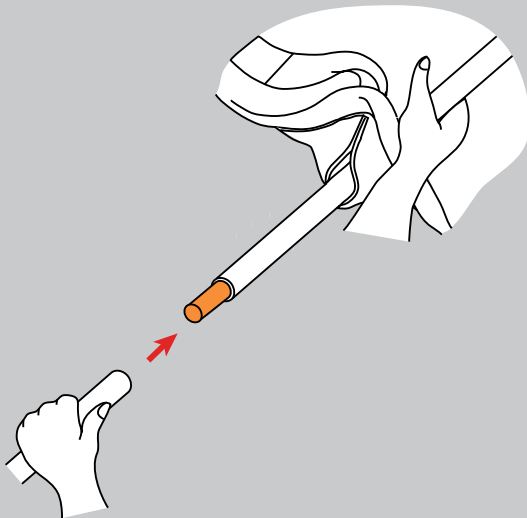
8a. To begin the lifting process, have ALL FOUR people located at alternating runners. Each person should also be holding one of the 2' -6" pipes and know which base plate belongs to their location.



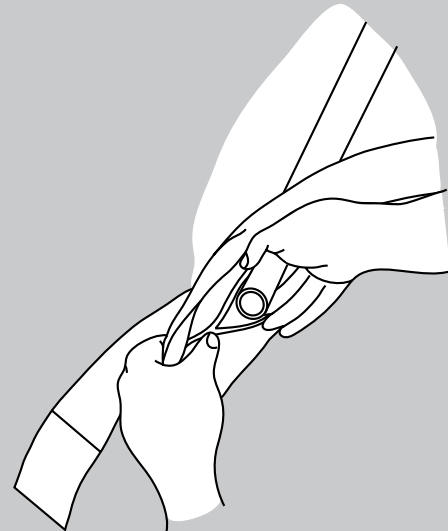
8b. Have everyone grab their section of the Pod SIMULTANEOUSLY. While lifting, push and step towards the person on the opposite side of the Pod.



8c. While lifting and pushing, insert the 2' -6" PVC pipe over the dowel end of the already inserted 5' pipe.

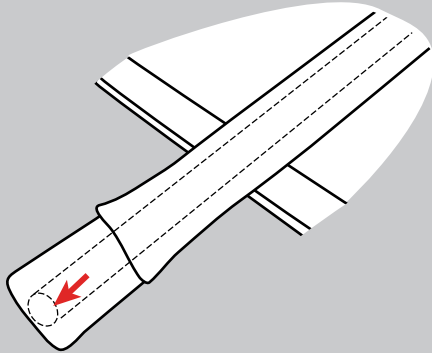


8d. PVC now sits inside the heavier fabric sock. This will eventually be placed into the base plates.

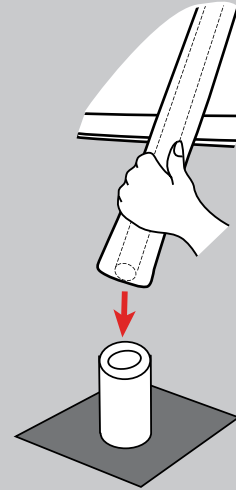


Any and all rights (including, without limitation, copyright, design patent, use patent and trademark) in and to all designs, concepts, renderings, or graphics (collectively, "Design") represented in this document were created by Moss Inc. and remain the sole and exclusive property of Moss Inc. Use of any such Design by the recipient without required purchase is strictly prohibited. ©2010

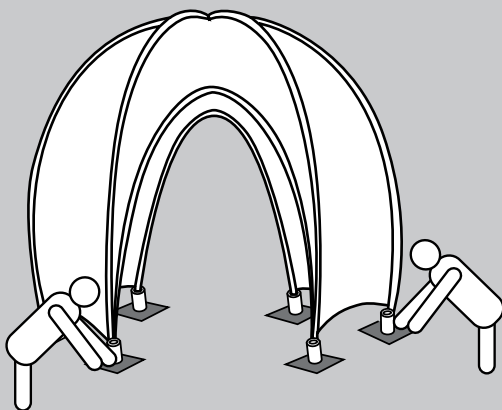
12. Stretch the opening over the end of the PVC so it slides into the fringe runner.



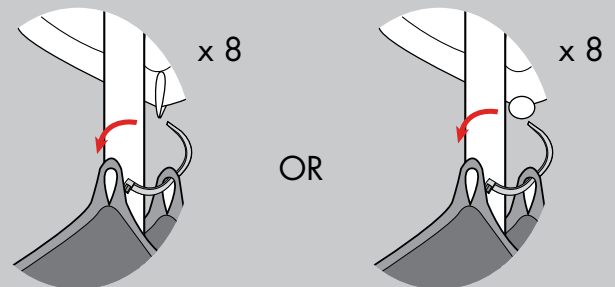
13. Place the completed end into the predetermined base plate. Move one section to the right and repeat steps 8a - 8f for the remaining pieces.



14. Adjust the base plates as needed to create a symmetrical Pod. Remember distances between base plates should be the same. The Pod will look best when the base plates form a perfect circle.

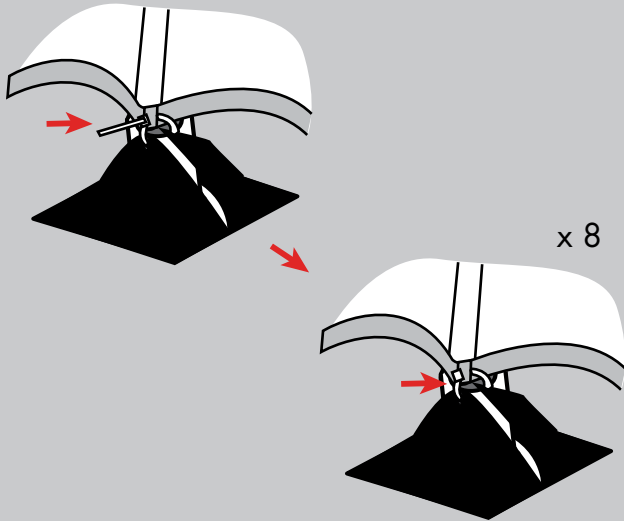


15. Locate a loop or button where the bottom and side runners cross. Using a zip-tie, connect the base cover to the loop or button as shown below. The zip-tie should go through the loop or around the button.

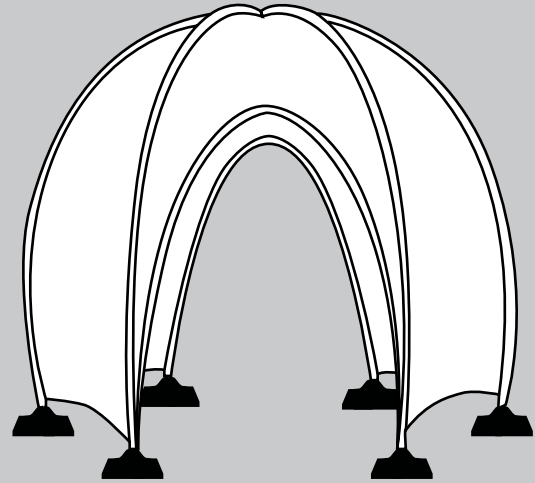


Any and all rights (including, without limitation, copyright, design patent, use patent and trademark) in and to all designs, concepts, renderings, or graphics (collectively, "Design") represented in this document were created by Moss Inc. and remain the sole and exclusive property of Moss Inc. Use of any such Design by the recipient without required purchase is strictly prohibited. ©2010

11. Once the base covers have been attached, snip the tails of the zip-ties down to the eyelet.



12. The Mod Pod is complete.



### Trouble Shooting:

- If not straight:
  - \* Check base plates and be sure they are equidistant from one another.
- If PVC disconnects from the hub:
  - \* Lower back to the ground and reset hub; make sure everyone is lifting and pushing together.

Any and all rights (including, without limitation, copyright, design patent, use patent and trademark) in and to all designs, concepts, renderings, or graphics (collectively, "Design") represented in this document were created by Moss Inc. and remain the sole and exclusive property of Moss Inc. Use of any such Design by the recipient without required purchase is strictly prohibited. ©2010