

PINK PROVIDES:

- 1 Nude Leotard
- 1 Matching Full Body Suit
- 1 Diva Costume
- 1 Set of Matching Booties

YOU PROVIDE:

- Site Plan/Event Layout
- Sewing Kit
- Dance Shoes
- Men: Dance Belts Recommended



Instructions valid for the following Divas: Art, Branch, Crown, Dot, Hologram, Hourglass, Liquid, Printed, Spiral, Striped, Vivid

Additional Support Please Call:
212-253-6666 or
After Hours: 646-853-3900

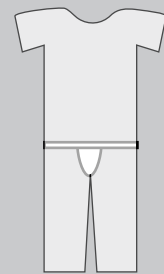
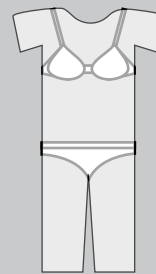
1. Please wash hands before handling the costumes. If you have long hair, pull it back into a low bun as it tends to get warm in the costumes.



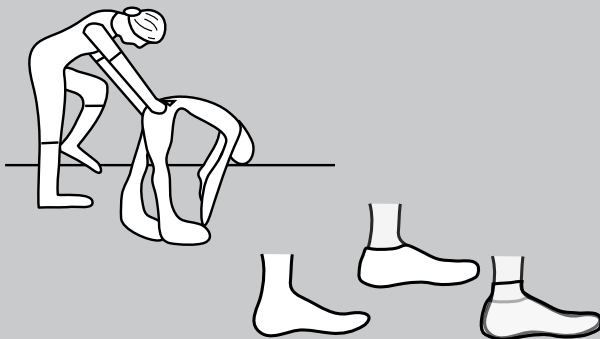
2. Locate the nude leotard and put on first. Women: place over regular undergarments. Men: place over recommended dance belt.

WOMEN

MEN

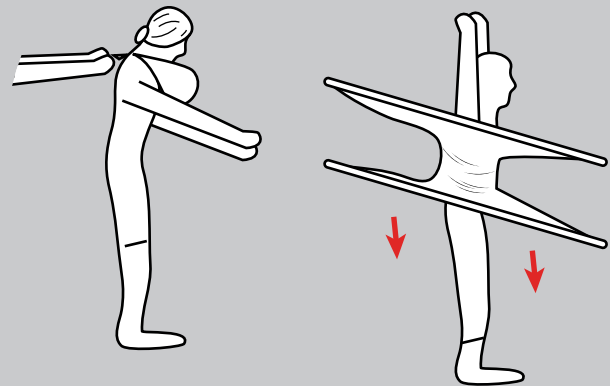


3. Step into the body suit and pull up to your waist. Then put on your dance shoes, followed by the provided booties.



Water moccasins are an acceptable dance shoe substitute.

4. Place arms and head into the suit, and have someone else zip you up. Put on the Diva costume by stepping into it or placing it over your head.



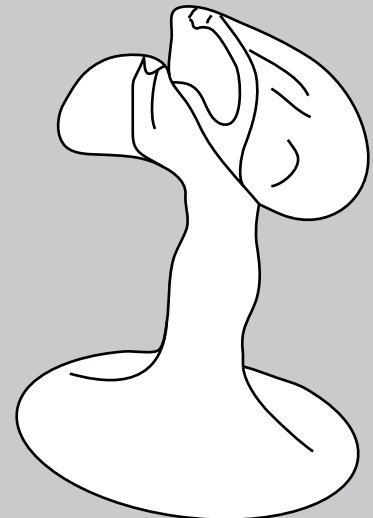
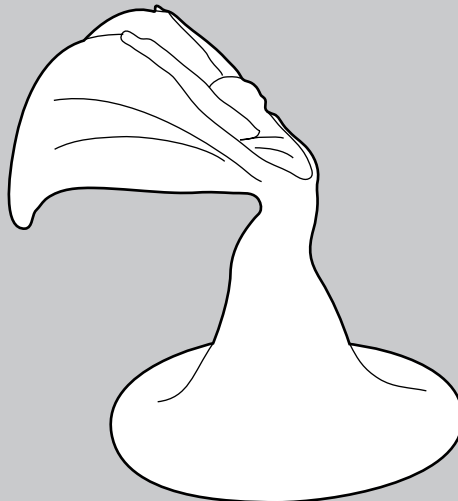
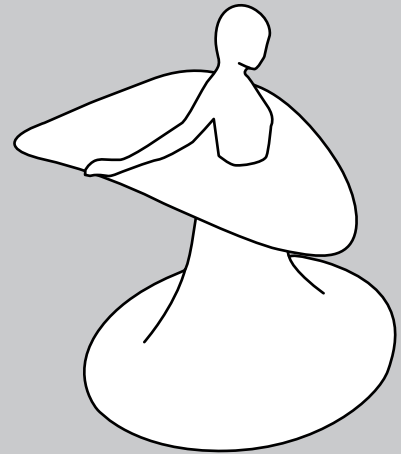
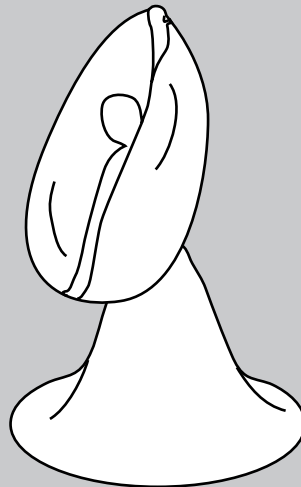
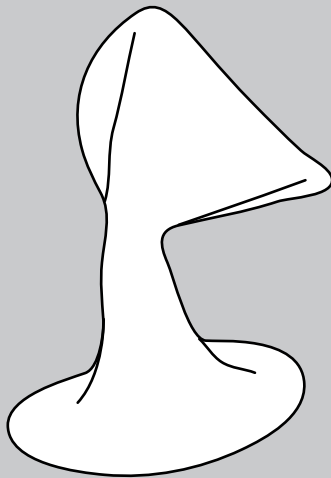
Any and all rights (including, without limitation, copyright, design patent, use patent and trademark) in and to all designs, concepts, renderings, or graphics (collectively, "Design") represented in this document were created by Moss Inc. and remain the sole and exclusive property of Moss Inc. Use of any such Design by the recipient without required purchase is strictly prohibited. ©2010

5. You can manipulate the top ring by lifting it up towards your face and stretching your body upwards.

Avoid everyday poses and never stop moving. Movement should be elegant, undulating, organic, and fluid. Motions should travel in curved paths and never in straight lines.

Try to vary speeds and heights.
Practice a variety of motions and poses.

The following are examples of poses to use as inspiration:



Any and all rights (including, without limitation, copyright, design patent, use patent and trademark) in and to all designs, concepts, renderings, or graphics (collectively, "Design") represented in this document were created by Moss Inc. and remain the sole and exclusive property of Moss Inc. Use of any such Design by the recipient without required purchase is strictly prohibited. ©2010