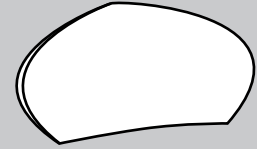


PINK PROVIDES:

- 1 Set of Right Small Crescent Metals
- 1 Set of Left Small Crescent Metals
- 3 Small Ellipse Center Pieces
- 1 Small Ellipse Fabric
- Extra Pop Buttons

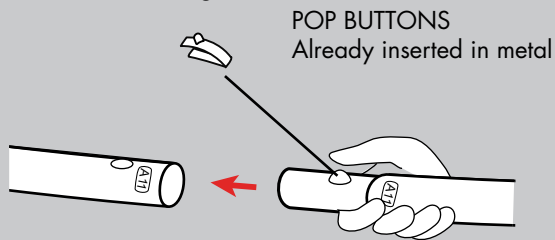
YOU PROVIDE:

- Site Plan/Event Layout
- Three Person Team
- Gloves
- Sewing Kit
- Plastic Drop Cloth
- Allen Key Set
- 6 - 8 Sandbags

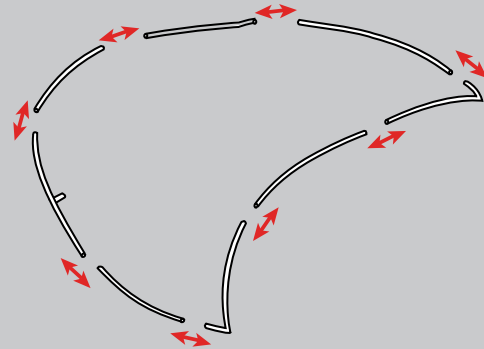


Additional Support Please Call:
212-253-6666 or
After Hours: 646-853-3900

Metals are labeled for easy assembly. Simply match the corresponding parts, depress the button, and slide together.

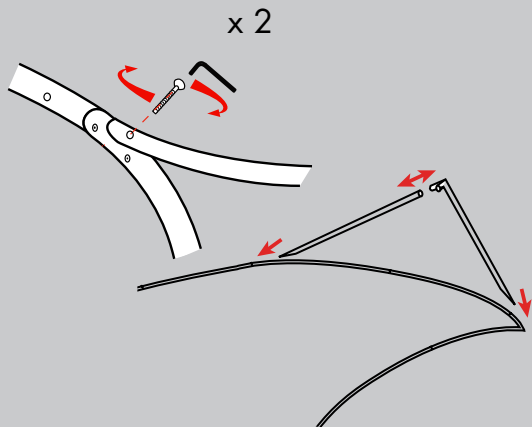


1. Start with one of the Crescent metals. Join the shock-corded pieces together to create the Crescent front.

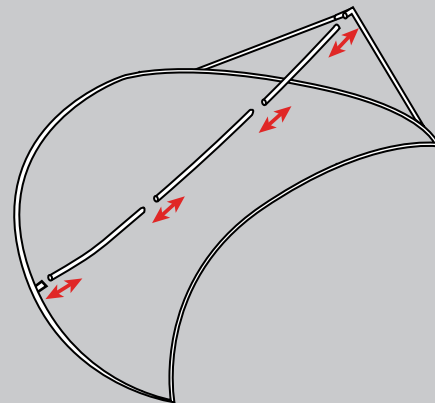


Prior to assembly, lay out drop cloth in designated work location. Before working with fabric, wash hands or put on gloves.

2. Attach the straight pieces which form the base. The end of these pieces may require an allen key to attach.

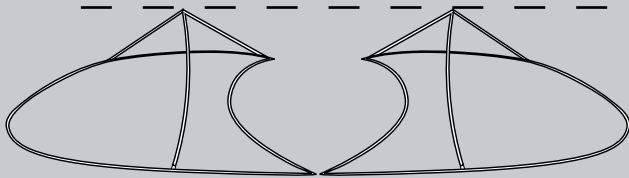


3. Attach the central supports from the base to the curve of the Crescent. Repeat steps 1-3 with the second Crescent. Please note that the second piece is a mirror image of the first.

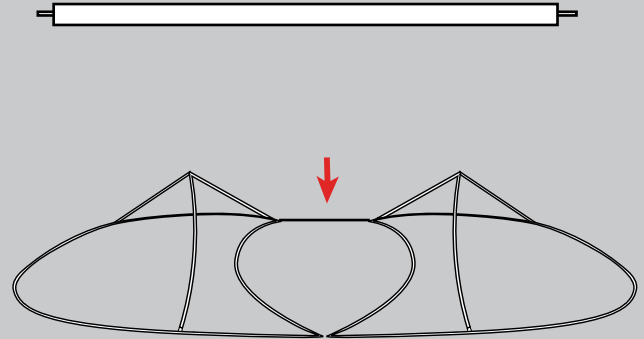


Any and all rights (including, without limitation, copyright, design patent, use patent and trademark) in and to all designs, concepts, renderings, or graphics (collectively, "Design") represented in this document were created by Moss Inc. and remain the sole and exclusive property of Moss Inc. Use of any such Design by the recipient without required purchase is strictly prohibited. ©2010

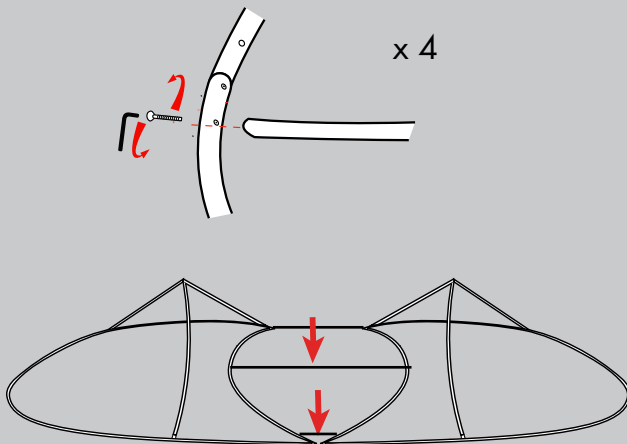
4. Attach the metals so that the points are touching and the bottom is in a straight line.



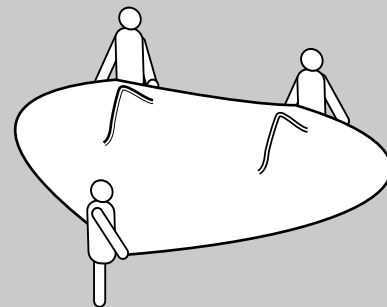
5. Locate the metal center pieces; they are three sizes. Place the mid-sized one into place at the base of the structure. Simply insert into the existing holes.



6. Place the longest connector in the middle and the shortest one at the top. These will need to be screwed into place with an allen key.

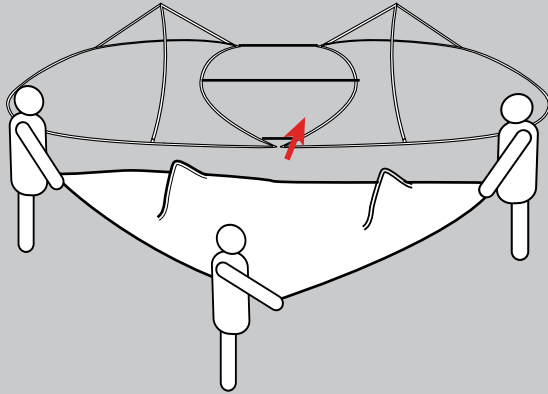


7. Locate the fabric. Have all three people spread the fabric so to determine the curves. One side (front) will be flat and the other (back) will appear to have extra fabric as well as extra zippers. The main zipper runs along the bottom of the structure.



Any and all rights (including, without limitation, copyright, design patent, use patent and trademark) in and to all designs, concepts, renderings, or graphics (collectively, "Design") represented in this document were created by Moss Inc. and remain the sole and exclusive property of Moss Inc. Use of any such Design by the recipient without required purchase is strictly prohibited. ©2010

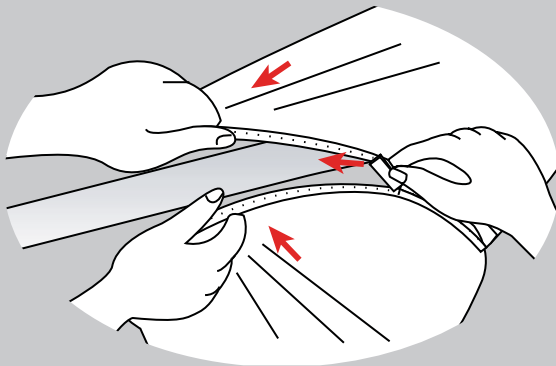
8. Slide the fabric over the metal, working from the top of the frame to the bottom.



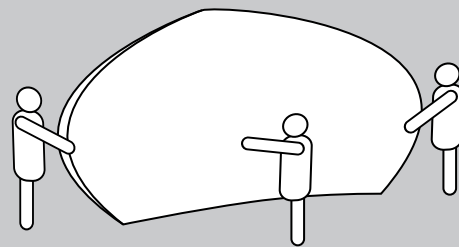
9. The zipper will zip across the bottom in a triangular pattern. The zipper should be in line with the metals. The bottom is made from thick black fabric.



10. Have one person pull the fabric over the metal while another one zips. The fabric is strong, so we encourage pulling hard!

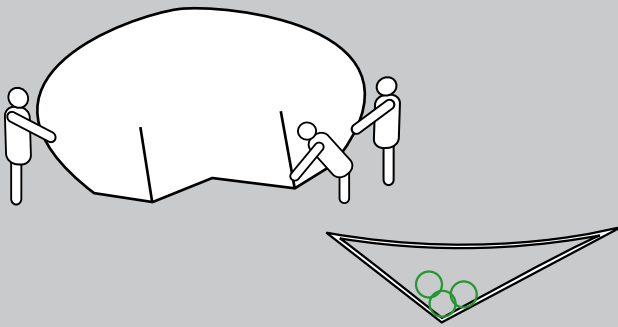


11. With two people on each side of the Ellipse and one at the top, stand the Ellipse and position in the final location. The first two people should remain holding the frame while the third moves to step 12.



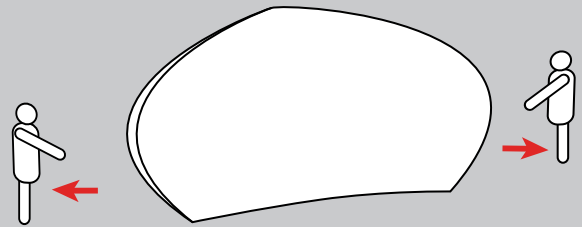
Any and all rights (including, without limitation, copyright, design patent, use patent and trademark) in and to all designs, concepts, renderings, or graphics (collectively, "Design") represented in this document were created by Moss Inc. and remain the sole and exclusive property of Moss Inc. Use of any such Design by the recipient without required purchase is strictly prohibited. ©2010

12. Unzip the two zippers that run vertically along the back. Insert sandbags into these openings to stabilize. Place sandbags on actual metals.

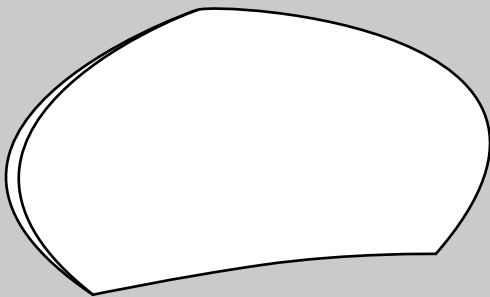


Approximate
Sandbag Placement
For Each Zipper

13. After the sandbags are inserted, slowly release the frame while checking for stability. If it appears wobbly, reposition sandbags. Make sure sandbags sit on the metals. Re-zip the back.



14. The Ellipse is complete. If final location moves, remove sandbags, place in new location, and then repeat steps 11 - 14.



Trouble Shooting:

- If the base doesn't seem to fit together:
 - * Loosen the connection with the allen key, attach all pieces, then retighten;
 - * Attach the middle piece first and then the sides of the triangle; using the allen key, tighten the middle piece last.
- If the Ellipse is wobbly:
 - * Place the sandbags onto the metals, away from the large flat surface.
- If the fabric doesn't seem to fit:
 - * Before placing fabric onto frame, make sure that the side with the extra fabric is on top (i.e. the back of the Ellipse.)

Any and all rights (including, without limitation, copyright, design patent, use patent and trademark) in and to all designs, concepts, renderings, or graphics (collectively, "Design") represented in this document were created by Moss Inc. and remain the sole and exclusive property of Moss Inc. Use of any such Design by the recipient without required purchase is strictly prohibited. ©2010

Final Note:

Metals:

After use, dismantle. Each metal is labeled; place back in the corresponding labeled bag. If possible, zip-tie pieces together.

Under NO circumstances should the metals be taped to one another.

Fabric:

Each fabric is labeled on the Pink Inc. tag and should be placed back in the corresponding labeled bag.

Any and all rights (including, without limitation, copyright, design patent, use patent and trademark) in and to all designs, concepts, renderings, or graphics (collectively, "Design") represented in this document were created by Moss Inc. and remain the sole and exclusive property of Moss Inc. Use of any such Design by the recipient without required purchase is strictly prohibited. ©2010